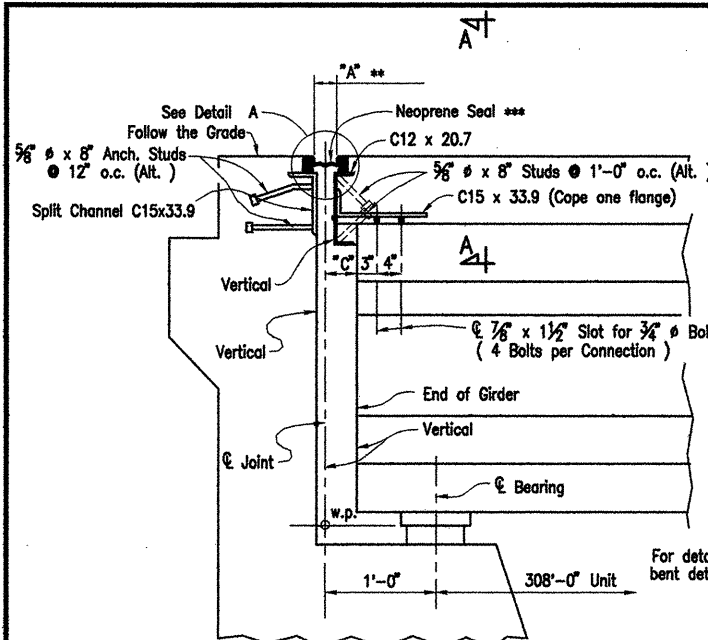
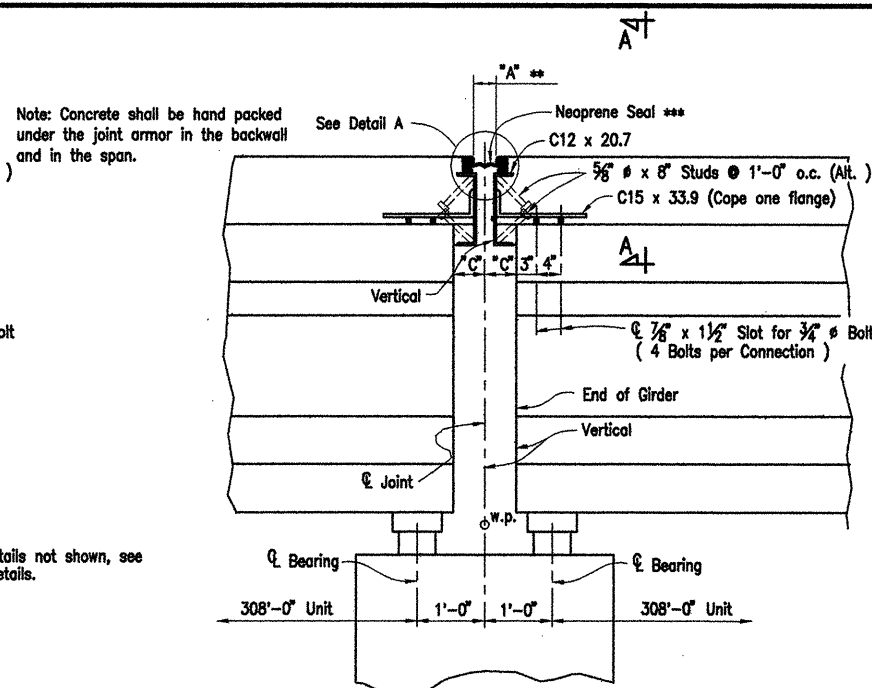


DATE REVISED	DATE FILMED	DATE REVISED	DATE FILMED	FED. ROAD NO.	STATE	FED. AID PROJ. NO.	SHEET NO.	TOTAL SHEETS
4/1/09					ARK.			
						JOB NO. 110503	81	233
						06829 EXP. JOINT		41885



DETAIL OF JOINT AT END BENTS 1 AND 33
N.T.S.

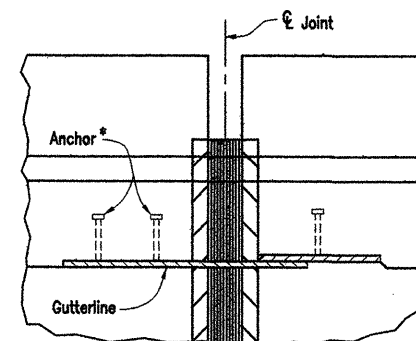


JOINT DETAILS AT BENTS 5, 9, 13, 17, 21, 25, AND 29
N.T.S.

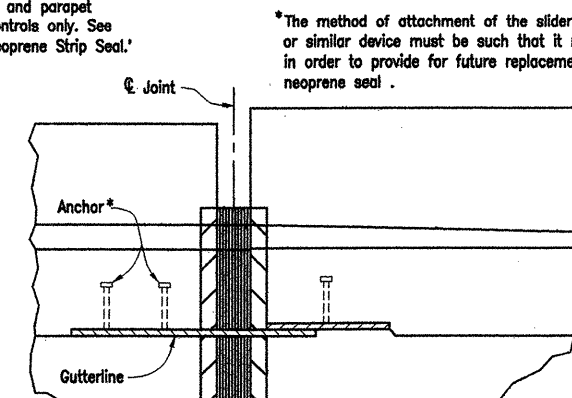
** 2 3/4" Strip Seal Joints shown on dwg's 41868 to 41870 represent the 2 3/4" Jt. @ 60°F.

*** Strip Seal Joint Components shall be capable of moving between the Amin. @ 120°F and Amax. @ 0°F.

Note: Details of Joint turn-up in curb and parapet are general and show basic design controls only. See SP Job 110503, 'Armored Joint with Neoprene Strip Seal.'



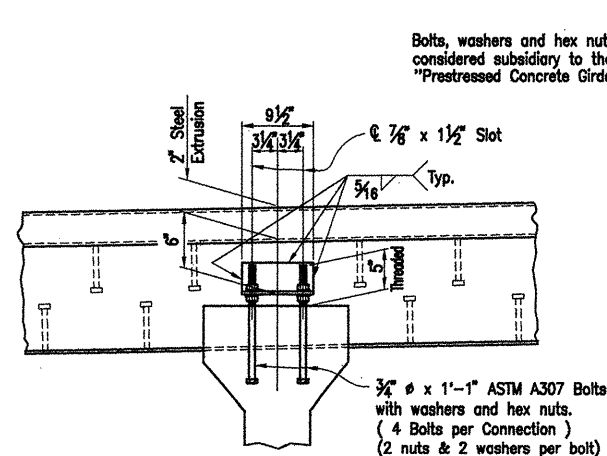
SECTION D-D AT INTERMEDIATE JOINTS
N.T.S.



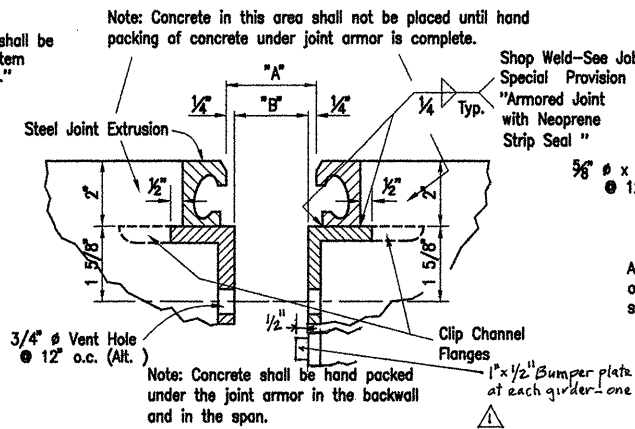
SECTION D-D AT END BENTS
N.T.S.

*The method of attachment of the slider plate assembly or similar device must be such that it may be removed in order to provide for future replacement of the neoprene seal.

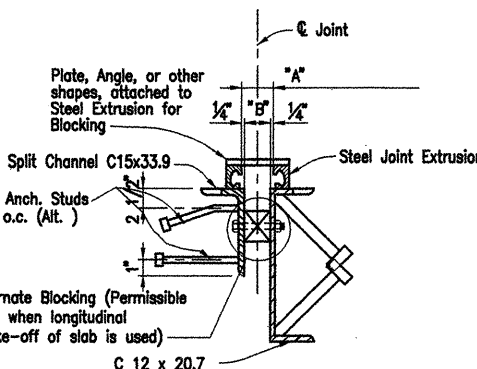
Note: Concrete shall be hand packed under the joint armor in back wall and in each span.



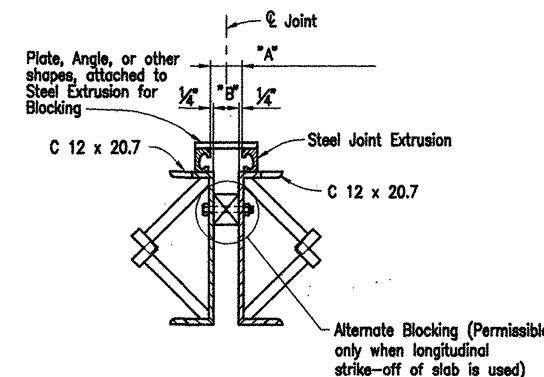
SECTION A-A
N.T.S.



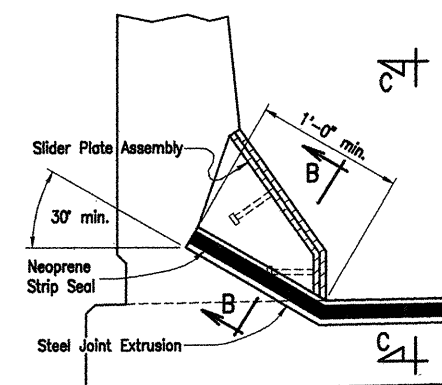
DETAIL A
N.T.S.



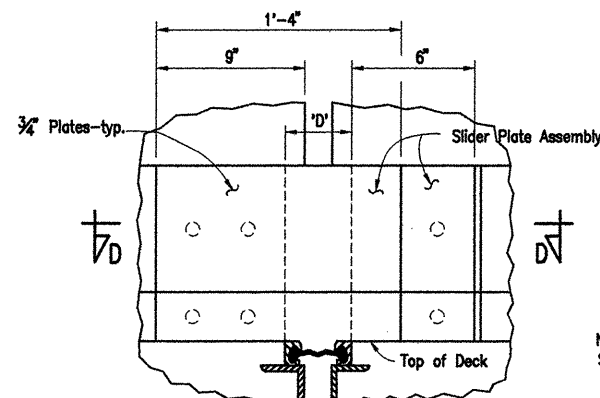
DETAILS FOR BLOCKING EXPANSION
JOINT DEVICE AT END BENT
N.T.S.



DETAILS FOR BLOCKING EXPANSION
JOINT DEVICE AT INT. BENT
N.T.S.

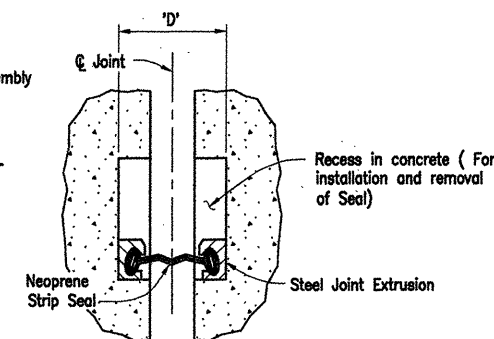


DETAIL OF NEOPRENE SEAL AT CURB
N.T.S.



Note: Dimension 'D' equals the width of opening in parapet at curb to allow for removal or repair of joint.

SECTION C-C
N.T.S.



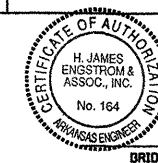
Note: Dimension 'D' equals the width of opening in parapet at curb to allow for removal or repair of joint.

SECTION B-B
N.T.S.

STRIP SEAL JOINT DATA

Roc Roe Bridge Bent No.	Width Perpendicular to Jt. @ 24 Hr. Avg. Temp. ** of:				Width Perpendicular to Joint at 24 Hr. Avg. Temp. ** of:				Width Perpendicular to Joint at 24 Hr. Avg. Temp. of 60° F.	
	"A min." 120° F.	80° F.	60° F.	40° F.	"A max." 0° F.	80° F.	60° F.	40° F.		
1 & 33	2 1/16"	2 1/2"	2 3/4"	3"	3 7/16"	2"	2 1/4"	2 1/2"	6"	
5, 9, 13, 17, 21, 25, 29	1 7/16"	2 5/16"	2 3/4"	3 3/16"	4 1/16"	1 13/16"	2 1/4"	2 11/16"	6"	

SHOW BUMPER PLATE 4/1/09
N. James



ALTERNATE NO. 1 ROC ROE BRIDGE

DETAILS OF EXPANSION JOINTS

ROC ROE & WHITE RIVER RELIEF
STRS. & APPRS. (CLARENDON) (F)
MONROE COUNTY

ROUTE 79 SEC. 13

ARKANSAS STATE HIGHWAY COMMISSION
LITTLE ROCK, ARK.

Engstrom/Modjeski and Masters, Inc.

DRAWN BY: PMR DATE: Sept. 07
CHECKED BY: GPT DATE: Nov. 01
DESIGNED BY: YO DATE: Nov. 01
BRIDGE NO. 06829 DRAWING NO. 41885